



THE ANSWER TO IDEAL LIVING

# PRODUCT INSTALLATION MANUAL

WHEN IT COMES TO HOME, THIS IS THE BEST ANSWER.

- Intelligent Health Care
- Healthy Life

Infrared Sauna



# 902SH Infrared Sauna

## Installation & Owner's Manual

---

Please read this entire manual thoroughly before proceeding with the assembly.

---

## **CATALOGS**

- 01** ● **PRECAUTIONS  
AND INSTRUCTION**
  - 02** ● **INSTALLATION GUIDE**
  - 06** ● **OTHER FUNCTIONS**
  - 07** ● **CONCENTRATE ON  
PROFESSIONAL SAUNA**
  - 08** ● **CONTROL PANEL INSTRUCTION**
  - 11** ● **FUNCTION AND APPLICATION**
-

---

## PRECAUTIONS AND INSTRUCTION

### ATTENTION

Please read all instructions thoroughly before using.

Serious injury may result if ignore the following warning and instruction.

Basic precautions should always be followed when using this electrical equipment.

### DANGER

To avoid the risk of causing burns, fire, electric shock, or other injuries:

- Connect the power cord to a properly grounded outlet.
- Using only for its intended use as described in this manual.
- Don't use accessories not recommended by the manufacturer.
- Please disconnect the power after using.
- Please keep the electrical cord away from heated surfaces.
- If the sauna is faulty, the supply cord or plug is damaged, please stop using it immediately.

### WARNINGS

- Don't stay longer than one hour.
- Don't put the sauna on a humid environment.
- Don't touch the heater directly with hands or body for a long time.
- Don't use any sharp tools on or near the heaters (severe damage may result).
- Placing the sauna on a flat surface.
- Unauthorized disassembly of the sauna is prohibited.
- People with health problems should consult a physician for prior to using the sauna. (Including acute diseases, malignant tumors, high blood pressure, heart disease, allergic dermatitis, pregnancy, etc.)
- This product is not intended for use by person (including children) with reduced physical, sensory or mental capabilities, or lack of adequate experience knowledge, unless they have been given supervision or instruction concerning use of the appliance by a person responsible for their safety.

- To be on the safe side, children should not use the sauna.
- Using a sauna after taking alcohol, drugs, or medication can lead to hyperthermia and increase the risk of death.
- If you are feeling uncomfortable, exit the sauna immediately and consult a doctor.
- Children should be supervised to ensure that they do not play with the appliance.

### **HYPERTHERMIA**

Prolonged exposure in the sauna may cause hyperthermia. Hyperthermia occurs when body's core temperature rises above 98.6F. Symptoms of hyperthermia include a rise in body temperature, dizziness, lethargy, drowsiness, and fainting.

The effects of hyperthermia may include:

- a) Failure to perceive heat / Unawareness of impending heat
- b) Failure to recognize the need to exit the sauna
- c) Fetal damage in pregnant women
- d) Physical inability to exit the sauna
- e) Unconsciousness

## **INSTALLATION GUIDE**

Each panel is heavy, especially the top panel. Be careful to avoid injury when installing. This sauna requires at least 2 adults to complete assembly.

The panels should be install in the following order:

Floor Panel → Rear Panel → Left and Right Panel → Installing Door Handle → Place the Bench Support Panel and connect wires→ Bench Surface Panel → Install Ceiling Panel→ Waterproof strip→Enjoy your Sauna

### **Step 1: Position the Floor Panel**



Place the floor panel on a flat surface. Before assembly, make sure the floor is flat so that you can maintain a comfortable subsequent installation. (image1)

(image1)

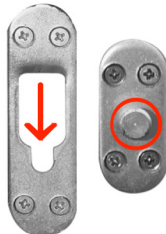
### Step 2: Position the Rear Panel



(image2)

Lift the Rear panel into position wedging the bottom of the panel into the channel in the floor panel. If your sauna is next to the wall, you can gently rest the rear panel against the wall of your home. (image 2)

### Step 3: Position the Left Side Panel and Rear Panel



(image3)

There is difference between the left and right side panels. The one with the control panel is the left side panel, another is the right side panel. Put the side panels into the slot of the floor panel and push it towards the rear panel. At the same time, open the glass door of the side panels. The side panels are little heavy, please pay attention. (image 3)

### Step 4: Installing Door Handle

Unscrew the matched door handle, insert the door handle into the hole on the glass door, and finally rotate and tighten it.

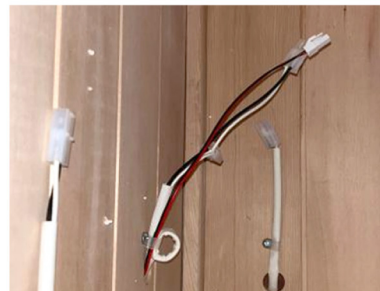


**Step 5: Place the Bench Support Panel and connect wires**

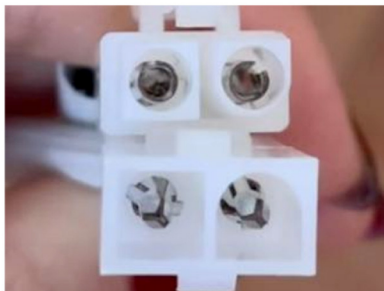
Place the Bench Support panel (image4) and connect the wires behind (image5). Each two wires have corresponding unique interface shape (image6), hear a click to indicate that the connection is completed (image7).



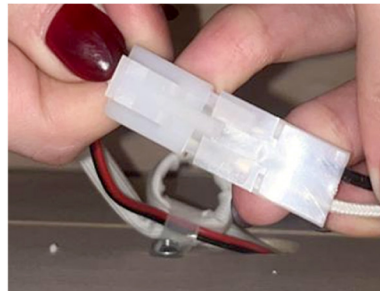
(image4)



(image5)



(image6)



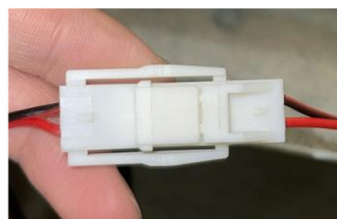
(image7)

**Step 6: Place the Bench Surface Panel**

Place the bench surface panel (image8), and connect the connecting wire of the light strip on the bench surface panel with the wire behind the bench support panel (image9).



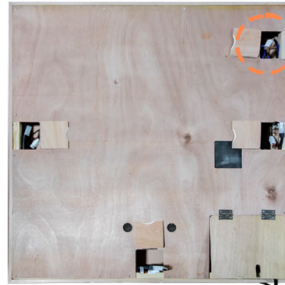
(image8)



(image9)

### Step 7: Install Ceiling Panel

Place the ceiling panel on top of the sauna (image10). Make sure that all panels are in the slots in the ceiling panel. Make sure that all wires on the side panel pass through the holes (image11). Finally, connect all the wires in the ceiling panel.



(image10)



(image11)

### Step 8: Waterproof strip

Install the matching waterproof strip on the glass door, please be sure to install it in place.



### Step 9: Enjoy your Sauna

**WARNING:** Pay attention to the risk of electric shock. Don't connect the power supply until all wires are properly connected.

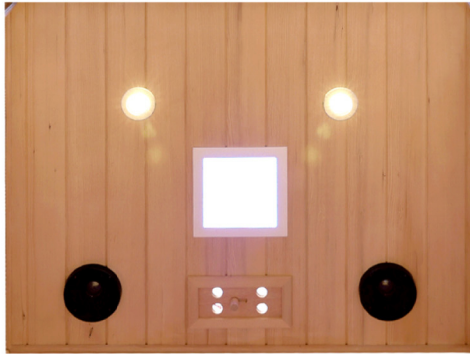
Congratulations!

Installation completed! Plug in and power on to enjoy your sauna!



---

## OTHER FUNCTIONS



Reading lamp



Vent

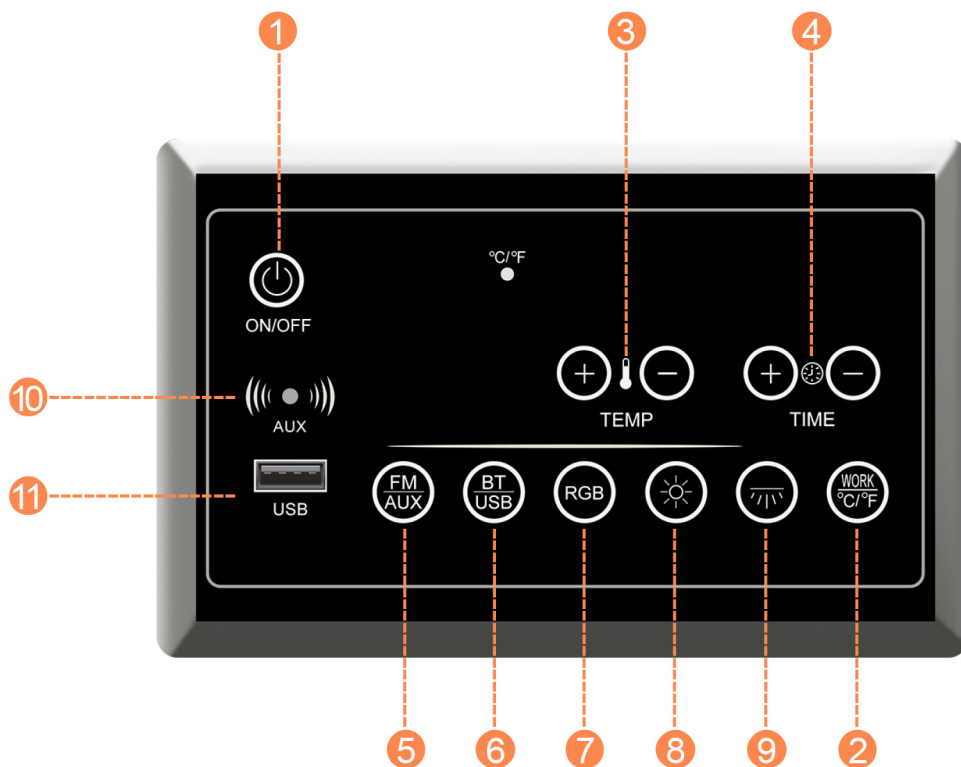


Color Lamp



Bluetooth  
: SAUNA BT

## CONTROL PANEL INSTRUCTION



1. Turn on/off the control panel.
2. Short press this button to turn the sauna on and off. Long press this button to switch °C&°F.
3. When the sauna working, + / - adjust the temp (up to 65°C/149°F). When the FM/AUX on, + / - adjust the channel. When the BT/USB on, + / - change the song.
4. When the sauna working, + / - adjust the time (up to 90 mins). When the FM/AUX or BT/USB on, + / - adjust the volume.
5. Short press to enter the FM mode for 5 seconds. Long press to enter the AUX mode for 5 seconds.
6. Short press to enter the Bluetooth mode for 5 seconds. Long press to enter the USB mode for 5 seconds.  
Press color light to activate the chromotherapy light system. After manually switching the all color of the color lamp this system will enter an automatic cyclic mode.
7. Press color light to activate the chromotherapy light system. After manually switching the all color of the color lamp this system will enter an automatic cyclic mode.

- 
8. Turn on / off the reading lamps.
  9. Turn on / off the outdoor lamps. (This is indoor product so that have no this function)
  10. AUX connection port.
  11. USB / MP3 connection port.

**Mobile APP connection:**

Scan the following QR codes to download the different system APP.



Apple APP QR Code



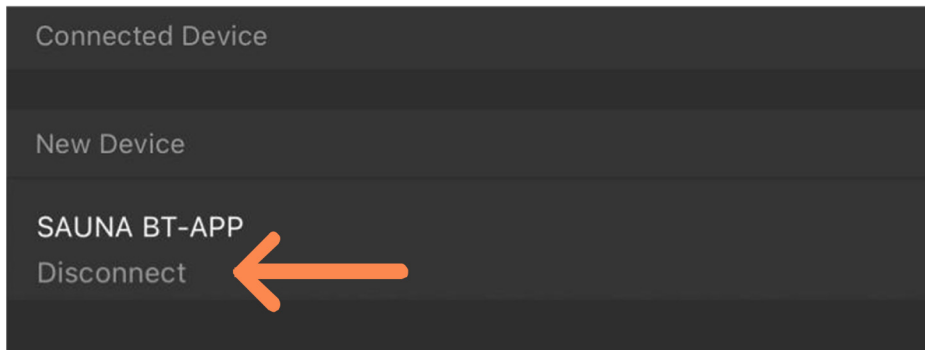
Android APP QR Code



---

## FUNCTION AND APPLICATION

1. Enter Settings to connect APP Bluetooth (SAUAN BT-APP).



2. Turn on/ off the control panel.
  3. Take the sauna working.
  4. Press color light to activate the chromotherapy light system.  
After manually switching the all color of the color lamp this system will enter an automatic cyclic mode.
  5. Turn on/off the reading lamps.
  6. Turn on/off the Wall lamps.
  7. Take the FM on, according to the TEMP +/- to search the channel and TIME +/- adjust the volume.
  8. Connect the Bluetooth audio (SAUNA BT) to play the music. According to the TEMP +/- to change the songs and TIME +/- adjust the volume.  
Insert USB to play music. According to the TEMP +/- to change the song and TIME +/- adjust the volume.
- Notify:** if you need to switch song list in bluetooth, or switch FM channel, or switch to USB function, everytime you have to press the related button first (like BT, FM,USB Button on control panel), then press Temp +/- to switch related function.

---

## CONCENTRATE ON PROFESSIONAL SAUNA

### SPECIFICATIONS

Product Name	Far Infrared Sauna
Model	902SH
Dimensions	47.2*38*76 in
Voltage	110-120VAC
Plug Type	15 Amps
Wattage	1820 W
Number of Heaters	7 pcs
Raw Material	Hemlock
Location	Indoor

## **KEEP IN WELL CONDITION FOR SAUNA ROOM**

- Place a large towel over the seat and baseboard before use to absorb excess sweat and prevent it from eroding the equipment.
- In order to prevent colds during use, it is recommended that the temperature be gradually lowered until the body gradually adapts to room temperature before stepping out of the equipment.
- If there is a lot of sweating after using the device, it is recommended to take a shower after 60 minutes, or use a room temperature wet towel to wipe the body after using the device, which is also an alternative to showering. It is also a good alternative to showering and is better for the skin.
- After use, open the door and ventilate for about 10 minutes, during the ventilation process, the device can be turned off, and the residual temperature can also be used to evaporate the internal water vapor.
- If there is sweat dripping onto the surface of the board or heating plate, etc., you can use a damp towel to wipe it in time to prevent discoloration and leaving stains, etc.
- The door just has a magnetic suction device, can not prevent violent entry, please pay attention to children, the elderly, pets and other bad entry.
- It is strictly prohibited to add locking devices to the door when using it, and it must be ensured that people can enter and exit conveniently at any time.

# WARRANTY CERTIFICATE

Please complete the following details and send back  
with the original item/parts with safety package.

Client's Name: \_\_\_\_\_

Address: \_\_\_\_\_

City: \_\_\_\_\_ State: \_\_\_\_\_

Postcode: \_\_\_\_\_ Model No: \_\_\_\_\_

Telephone: \_\_\_\_\_ Order No: \_\_\_\_\_

Date of Purchase: \_\_\_\_\_

Store from which product was purchased: \_\_\_\_\_

Problem Description: \_\_\_\_\_

- We provide 1year free maintain service for part of main electric equipment from when your purchase, please enclose this warranty card when you return back. Without this warranty card or change the warranty card, the maintain will not be provided.

**CONCENTRATE ON PROFESSIONAL SAUNA**



THE ANSWER TO IDEAL LIVING



**Call us (9-8 EST): +1 888-257-3857**

**Email us (24/5) : [service@casainc.com](mailto:service@casainc.com)**

**Message us : +1 562-551-8092**

**For sales : [dtc@casainc.com](mailto:dtc@casainc.com)**