

Instruction Manual

Shower Panel Kit



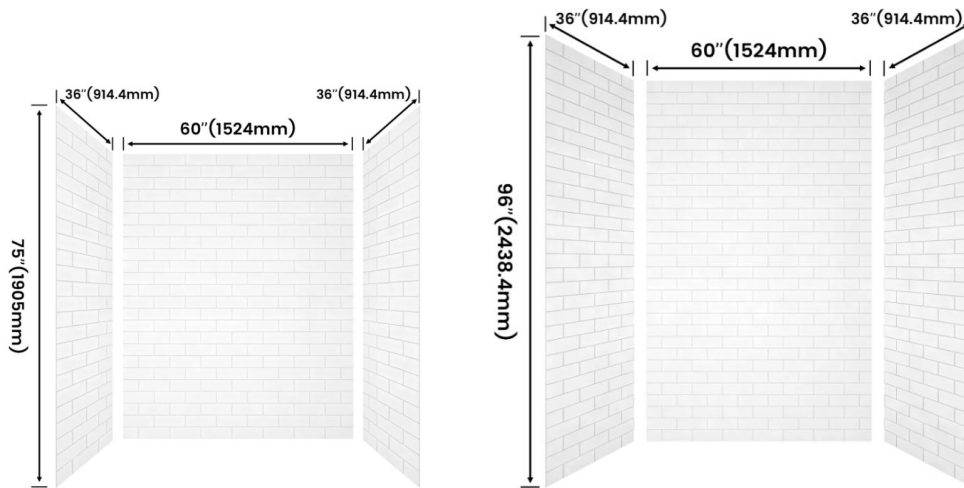
SKU: BR240016075, BR240016096, BR240026075, BR240026096.

Specifications

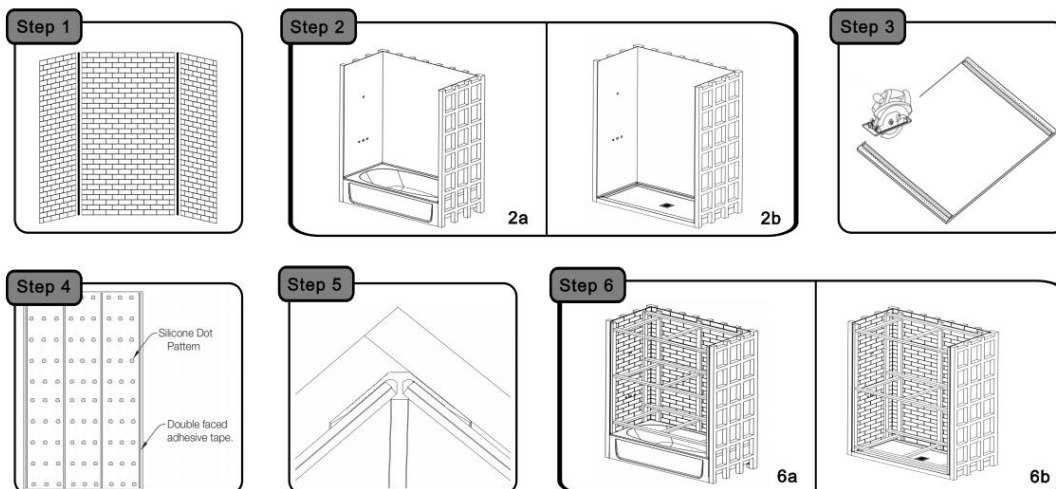
	60"L x 75"H x 36"W	60"L x 96"H x 36"W	60"L x 75"H x 36"W	60"L x 96"H x 36"W
Style	Small-format tiles		Large-format tiles	
Thickness	3-3.5mm			
Net Weight	90 lb.	112 lb.	90 lb.	112 lb.
Material	Solid Surface			
Color/Finish	White			
Number of Wall Panels	3			
Wall installation type	Glue Up			
Manufacturer Warranty	5-Year			

- **Easy Installation:** Shower wall panels are easily customizable, glue directly over existing surfaces, and require no messy demolition or tile removal.
 - **Effortless Cleaning:** Just wipe with a damp cloth and mild soap—no need for special cleaning products, keeping your shower wall looking fresh with minimal effort.
 - **Unmatched Durability:** The hard-coat surface is designed to withstand chips, stains, and peeling, offering a resilient, durable shower wall that lasts for years.
 - **Seamless Aesthetic:** Factory-finished edges provide a sleek, polished look, giving your bathroom a finished appearance without the need for additional trim.
- Customizable Niche:** Enhance your shower wall design by adding real decorative tiles to the niche, creating a truly personalized bathroom space.

Product Dimension:



Installation:



1.Check and Caulk

Open the package, check and make sure all required components are included in. Allow the contents to adjust to room temperature for at least six hours before installation. The wall panels should be installed with the temperature no lower than 55°F while the working space shall be dry. The wall surface must be dry, smooth and free of any dust, soap scum or any other contaminants. And any seams or gaps must be filled with thin set material before panel installation.

2.Wall Surface Preparation

Measure and cut out openings for the faucets, bathtub spout and/or shower head. Reserve space according to the bathtub (2a) or shower tray (2b). Install 1/2 inch moisture-resistant cement board (not included) over back, front and rear wall surfaces of the rough opening.

3.Cut and Drill

Place the wall panel, finished side facing up on a flat surface. Place pieces of masking tape over the area where the saw contacts the finished surface of the panel. Cut wall panels according to actual conditions. Drill or cut from the finished side (facing up) of the panel. For best results when drilling, place a scrap of wood beneath the hole to ensure a clean cut. Dry fit the panel and make any necessary adjustments.

4.Secure with Construction Adhesive

Clean the backs of each panel with denatured alcohol or another non oil-based cleaning solvent. Select the panel you are going to install, (usually the back panel). Secure the wall panels with construction adhesive as in Step 4. Carefully align the panel, then press firmly into place against the wall. It is important to apply hand pressure to the entire surface of the panel to bond it into place. Press along all edges to be sure the adhesive tape is secured.

5.Treatment of Splicing Place

For the splicing place between the two wall panels, there are two options: you can use aluminum alloy strips to connect and fix with construction adhesive(see step 5) or directly apply silicone sealant transparent adhesive to seal the joint between the two wall panels.

6.Lumber,as Required for Bracing

Install the temporary bracing to hold the wall panels in place until the silicone sealant is completely set (usually 24 hours).This will allow proper curing of the silicone.