



THE ANSWER TO IDEAL LIVING

PRODUCT INSTALLATION MANUAL

WHEN IT COMES TO HOME, THIS IS THE BEST ANSWER.

SHOWER SYSTEM FAUCET

Installation instruction

H1107

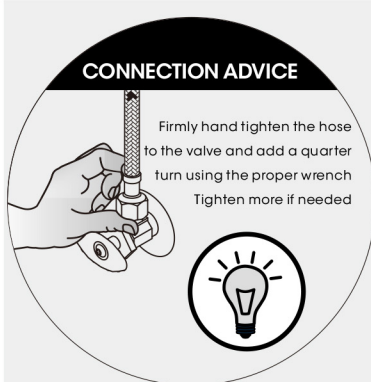
CH/BN/MB/BG/ORB



1、INSTALLATION PRECAUTIONS

1. When you open the product packaging, please check the product and accessories at first. If there are any discrepancies, please contact us promptly. We will provide you with a satisfactory solution.
2. The hot and cold water supply pipe of the valve must be properly connected. When facing the front of the valve, the hot water supply is on the left and cold water supply is on the right. Incorrect connection will cause permanent damage to the cartridge.
3. If the accessories to be changed without affecting the use, we will not make a prior notice.
4. The impurities in the water supply pipe must be cleared before installation to avoid blockage.
5. The water pressure of the faucet is 0.05MPa-1.0MPa(including cold water and hot water Pressure). Applicable water temperature range:39° F-194° F.

2、PREPARATION BEFORE INSTALLATION



* Apply plumber's putty under the plastic cover deck plate to seal your installation.

*The model shown in the installation steps may differ from the one in box however connection type and installation steps are the same.

Plumber's putty



Thread seal tape

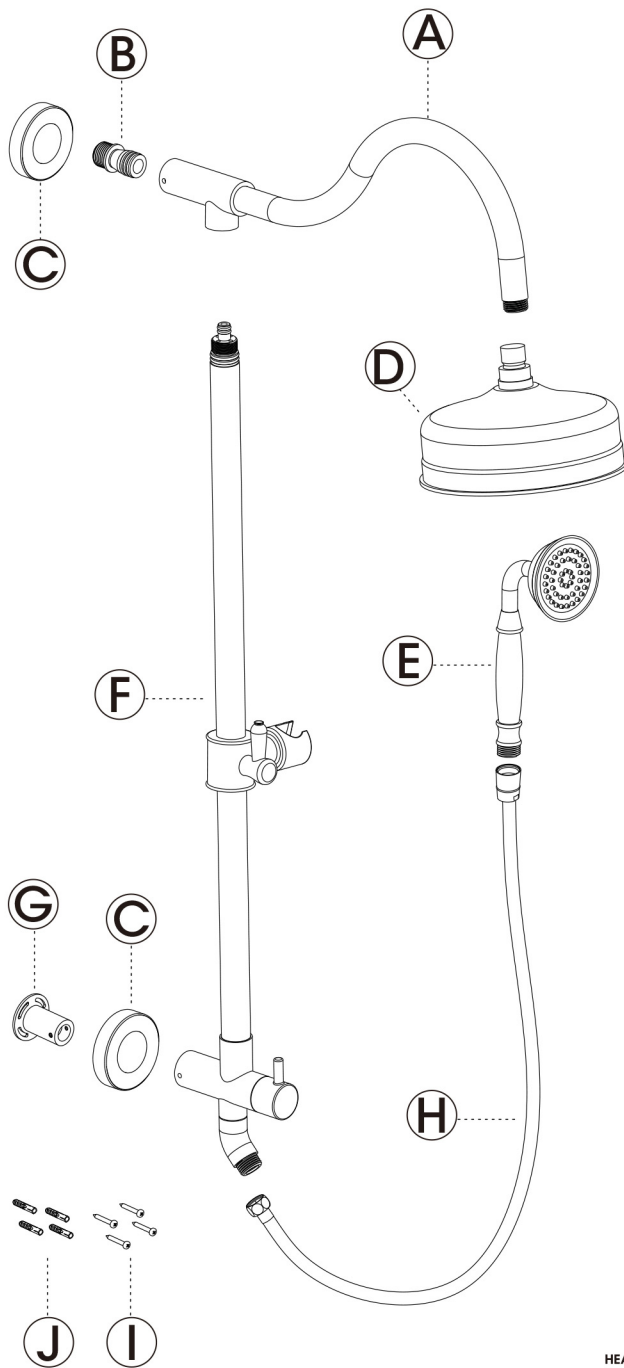


Included



3. CONCEALED FAUCET ACCESSORIES LIST

No.	Description
A	Shower Head
B	1/2"x2" NPT Nipple
C	Escutcheon
D	Shower Head
E	Shower hand
F	Diverter Body & Shower Pipe
G	Mounting Bracket
H	Stainless Steel Hose
I	Mounting Screw
J	Anchor

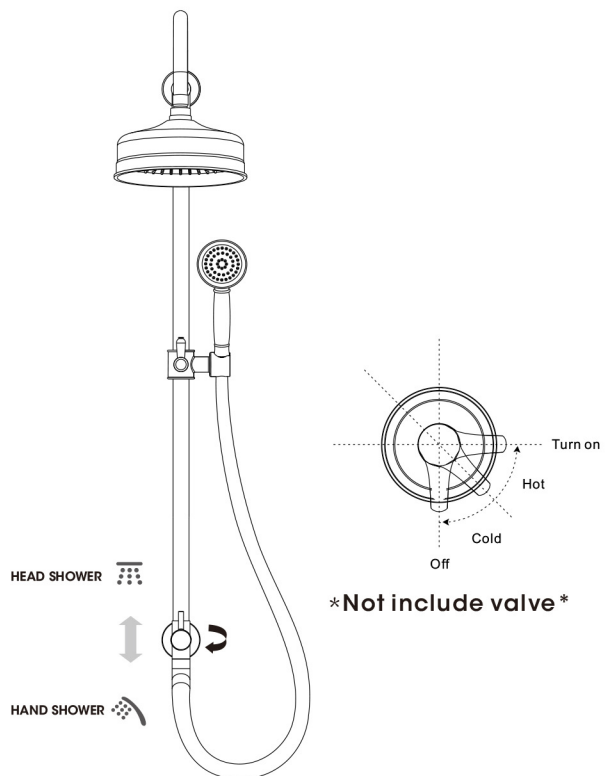


CARE INSTRUCTIONS

Rinse the product with clear water. Dry the product with a soft cloth.

DO NOT:

Use abrasive cleansers, cloths, or paper towels. Use any cleaning agents containing acid, polish, wax, alcohol ammonia, bleach, solvent or any other corrosive or harsh chemical cleansers.



4 Installation Instructions

1. Determine length of brass NPT nipple needed:

a. Place mark on existing shower arm at wall surface. Unscrew shower arm from elbow in wall.

b. Measure distance from mark on shower arm to end of shower arm threads. Add " to this measurement, and then round to nearest/".

Example 1: If measurement = 1h", add l" = iA", rounded = 2" NPT nipple-this is the length needed.

Example 2: If measurement = 1%", add/" = 2/", rounded = 2" NPT nipple-this is the length needed.

2. Apply generous amount of PTFE Thread Sealant Tape to both ends of nipple.

3. Hand tighten inlet fitting onto nipple, then nipple to fitting in wall. Use adjustable wrench on inlet fitting to tighten both connections simultaneously until both are secure with no leaks.

4. Slide hand shower holder off shower pipe.

5. Slide soap dish onto shower pipe to desired position and secure with set screw. For model 1077 slide soap dish retainer onto shower pipe. Slide plastic soap dish onto shower pipe and push soap dish down until flush with retainer.

CAUTION-DO NOT OVERTIGHTEN

6. Reinstall hand shower hanger.

7. Secure swivel joint onto bottom of diverter body. Swivel joint should move freely side to side.

CAUTION-DO NOT OVERTIGHTEN

8. Insert shower pipe into top tee. Secure with set screw.

9. Slide top escutcheon over top tee. HINT- Lubricate escutcheon o-ring; a small amount of soapy water will do the trick.

10. Slide bottom escutcheon over diverter body. HINT- Lubricate escutcheon o-ring; a small amount of soapy water will do the trick.

11. Loosen set screw on diverter and slide lower mount into diverter body.

12. Push top tee over inlet fitting until flush against fitting. Position diverter body so shower pipe is plumb (vertical).

13. Mark location of lower mount with pencil.

14. Wall surface must be clean of any residue and completely dry. OPTION 1: 3M Tape Remove covering of 3M Tape and position mount on marked locations.

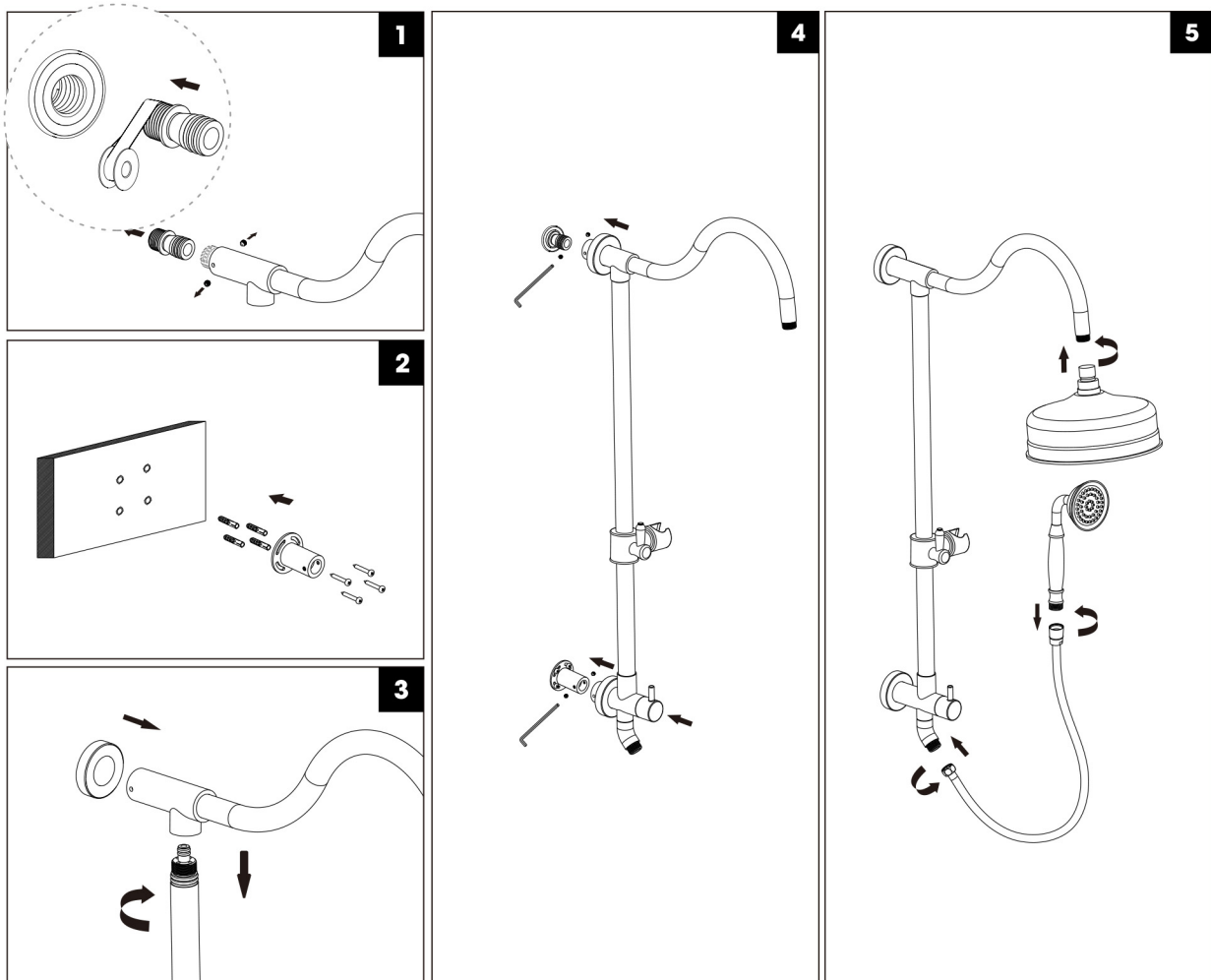
15. Apply pressure to mount for 30 seconds by pushing firmly against the wall. To ensure proper adhesion, allow one hour before using your ShowerSpa and keep area around the mount as dry as possible for the first 24 hours. Tape and glue will be fully cured after 24 hours.

16. Position shower pipe parallel to wall by sliding diverter body on lower mount. Secure diverter to lower mount with set screw.

17. Insert rubber washer into both ends of hose. Connect hex head end to swivel joint and tapered end to hand shower. Place hand shower into adjustable hanger.

18. Tighten shower head securely to shower arm.

5、SHOWER SYSTEM INSTALLATION INSTRUCTION



6、PRODUCT REPARATION

If the cartridge is worn out which cause leakage, please turn off the water source. Remove the handle, panel, and decorative cover in sequence, remove the gland with a wrench, then take out the cartridge and copper sleeve. Repair or replace the new cartridge, then install it again in sequence.

7. CLEARANCE AND MAINTENANCE

In order to keep the faucet appearance smooth and good performance, please follow the below steps to clean and maintain the faucet.

1. Clean with water and dry with a soft cotton cloth.
2. Use a mild liquid and a colorless glass cleaner to remove surface dirt and scale, also you can use the cleaner without grinding function.
3. Do not use detergents, polishing tools, abrasive cloth, paper towels or scrapers to clean the faucet.
4. Do not use acid cleaners, insoluble granular detergents, soaps etc to clean the Faucet.



Call us (9-8 EST): +1 888-257-3857

Email us (24/5) : service@casainc.com

Message us : +1 562-551-8092

For sales : dtc@casainc.com