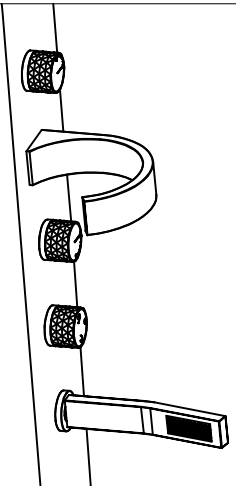


# Bathtub faucet



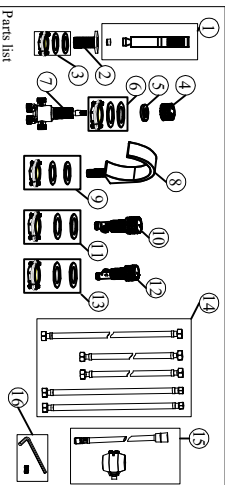
Model:KCLT0068

## Before installation

1. Check the packaging and make sure all parts are included. If any parts are missing or damaged, please contact us.
2. The product has been strictly tested by the manufacturer, and it is not recommended to be disassembled.
3. Turn off the main water supply system before starting the installation.
4. Be sure to shut the water supply pipe before installation to remove any air and debris (important).
5. If the hot and cold water supply pipes are not properly connected. If standing in front, connect the hot water pipe on the left and the cold water pipe on the right.
6. After installation, check for leaks and make sure each joint is securely sealed.

## Cleaning and maintenance

1. Rinse with clean water and wipe dry with a soft cloth.
2. Do not use corrosive cleaning products, so as not to damage the chrome plating layer; product warranty is not effective.
3. Don't use cloth with rough surfaces.



## Parts list

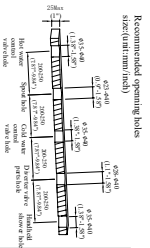
NO	PART NAME	NO	PART NAME	NO	PART NAME
1	Handheld shower	5	Faucet assembly ring	13	Faucet ring
2	Control connector	6	Faucet gasket	14	Water supply hoses
3	Faucet gasket	7	Swivel valve	15	Shower hose & shower head
4	Swivel knob	8	Water outlet	16	Hexagon wash

Customer Service

Email:customer@ksherwin@gmail.com

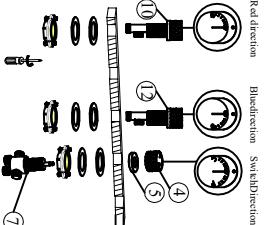
Phone:9512114792

## Tools will be needed:

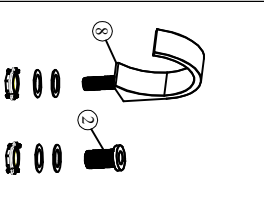


1. Drill the holes are as recommended size above.

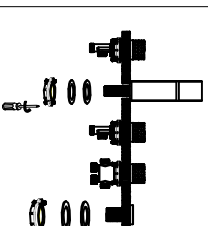
2. Use allen key to loose the screw in knob then disassemble knob cover/rubber washer diverter valve part as picture shows.



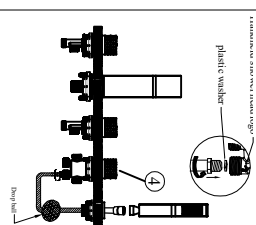
3. Pass the three parts above through bathtub hole as picture shows, reinstall the rubber washer and knob cover then tighten the parts and the screw in the knob.



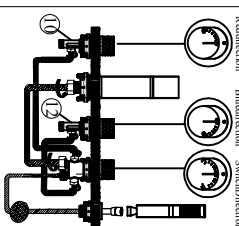
4. Disassemble the water nozzle, shower head seat nut and gasket.



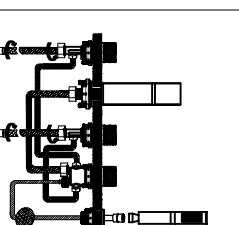
5. Fix and lock the water nozzle and shower head.



6. The hot shower is recommended to be shorter than the cold one and of equal length with the hot shower. The hot shower should be the inner distribution valve pipe.



7. Connect the water outlet and hot water outlet of the water control connector with the connecting pipe. The water and of the water outlet of the water control connector should be connected to the water distribution valve hole. The water and of the cold water outlet of the water control connector should be connected to the water distribution valve hole.



8. Connect the hot and cold water supply pipes to the hot and cold water outlet of the water control connector and connect the hot and cold water supply pipes to the hot and cold water outlet of the water control connector.