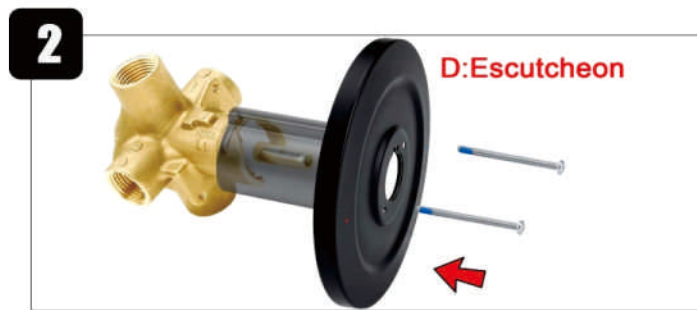
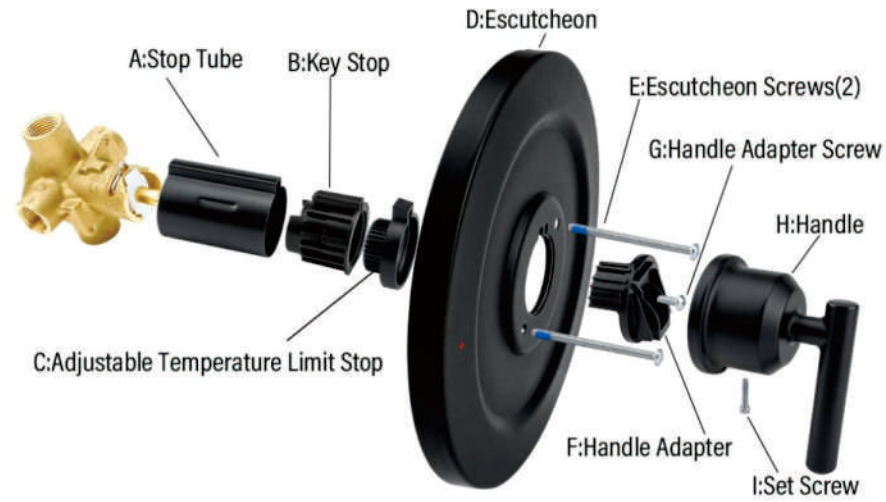


Dear Friend

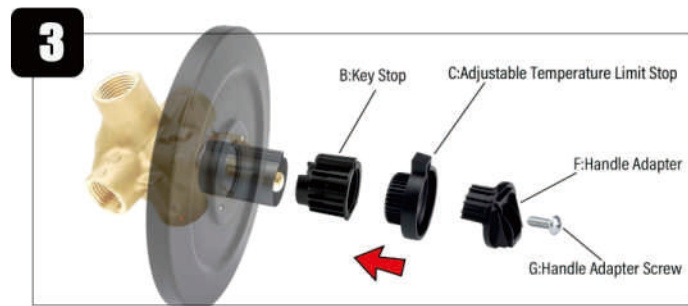
Thank you very much for choosing us!

We will always be at your service in the following time, the pursuit of high quality products is our goal of production all the time, the products are strictly checked by us before sending, if you encounter any problems in the process of use, you can contact us at any time, we provide you with a lifetime maintenance service.

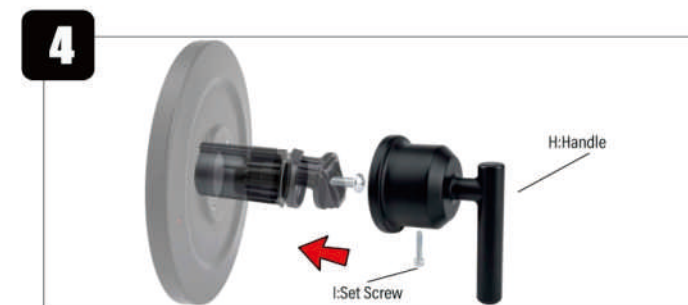
The following is the installation diagram of the product, the installation video will also be sent to you later, any questions can always contact us!



Secure (A: Stop Tube) against wall by threading Screws (D) through Escutcheon into valve.
Sujete el chapeton (A: Stop Tube) contra la pared atornillando los tornillos (A: Stop Tube) a traves del chapeton en la valvula.



Make sure cartridge stem is positioned with notch facing down.
Insert Key Stop (B) & Adjustable Limit Stop (C) into Stop Tube.
Install Handle Adapter (F) onto cartridge stem.
Secure with Handle Adapter Screw (G).



Place Handle (H) on Handle Adapter (I)

7. Product reparation

If the cartridge is worn out which cause leakage, please turn off the water source. Remove the handle, panel, and decorative cover in sequence, remove the gland with a wrench, then take out the cartridge and copper sleeve. Repair or replace the new cartridge, then install it again in sequence.

8. Clearance and Maintenance

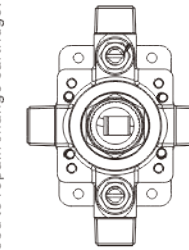
In order to keep the faucet appearance smooth and good performance, please follow the below steps to clean and maintain the faucet.

1. Clean with water and dry with a soft cotton cloth;
2. Use a mild liquid and a colorless glass cleaner to remove surface dirt and scale, also you can use the cleaner without grinding function.
3. Do not use detergents, polishing tools, abrasive cloth, paper towels or scrapers to clean the faucet.
4. Do not use acid cleaners, insoluble granular detergents, soaps, etc to clean the faucet.

6. Usage Instruction

When you open the faucet that's bathtub spout outlet water, if you want to switch to top shower outlet water please pull up the lifting rod of the bathtub spout, it will be top shower outlet water.

The outlet water adjusting device of the left and right sides, it can adjust the water flow rate and close outlet water function when you need to repair/change cartridge.



Note: If only close one side that it will cause faucet abnormal outlet water, for normal outlet water please make sure the adjusting position on both sides is open (counterclockwise to open).

5. Shower set installation

