



THE ANSWER TO IDEAL LIVING

PRODUCT INSTALLATION MANUAL

WHEN IT COMES TO HOME, THIS IS THE BEST ANSWER.

Introduction

Thank you for purchasing our faucet. The faucet you have purchased is crafted out of the highest quality nickel, brass and stainless steel. Each and every faucet was tested and carefully inspected by hand before delivering to our retailers.

Please read the instructions carefully to prevent any malfunction and damages to your plumbing and property.

Tools

The tools below are required to complete the installation. Some may not be needed depending on the model of the faucet that you are installing. For additional information, check with your local hardware store on the requirements for your installation.



Philips Screwdriver



Thread Seal Tape



Flashlight



Pliers



Adjustable Wrench



Safety Glasses

Specification

1. Turn off all water supply lines and drainage lines.
2. Clean the installation area thoroughly and remove any excess debris.

DESCRIPTION

- Flexible supply lines with 3/8" or 9/16" compression fittings

FLOW

Single-Handle Lavatory Faucet:

- North America: 1.5 gpm max (5.7L/min) at 60psi
- California: 1.2 gpm max (4.5L/min) at 60psi

Kitchen Faucet:

- North America: 1.8 gpm max (6.8L/min) at 60psi
- California: 1.8 gpm max (6.8L/min) at 60psi



Warranty

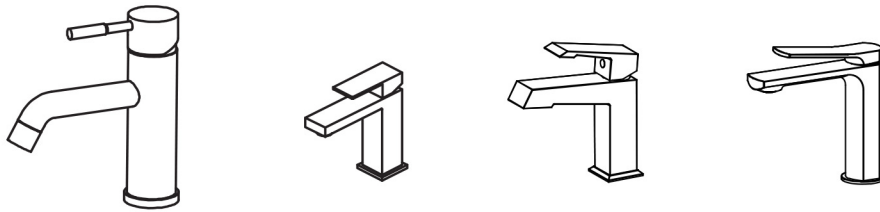
Notes before installation :

1. Please check that all components are present.
2. Before installation ensure that all feed lines are clear of debris and on/off valve is present.
3. Ensure water pressure is between 20-125 PSI (includes combination of hot and cold feed lines).
4. Pictures in the manual are general in content and may not represent exactly your purchased faucet. If you are having difficulties please contact a professional plumber.
5. If you will be away from home for an extended period you should shut off the main water supply.

Daily maintenance

1. Dip the cloth into mixture of white vinegar and water (50/50) and scrub to remove hard-water spots.
2. Check aerator (if present) regularly for calcium build up are when water stream is not optimum.
3. DO NOT use caustic cleaning products as the use will break down finish and will void the product warranty.
4. Acceptable cleaners include mixture of white vinegar and water (50/50) or mild non-abrasive liquid detergents.
5. If the water pressure appears to be less than optimum remove, inspect, clean or replace aerator.

Basin Series



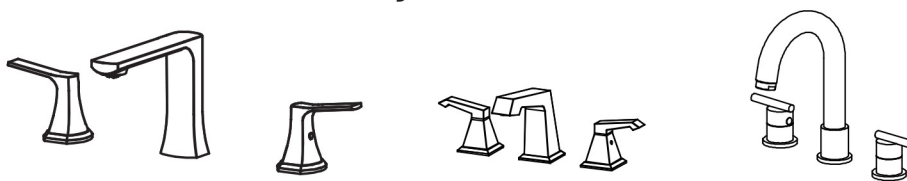
Kitchen Series



Pull out kitchen Series

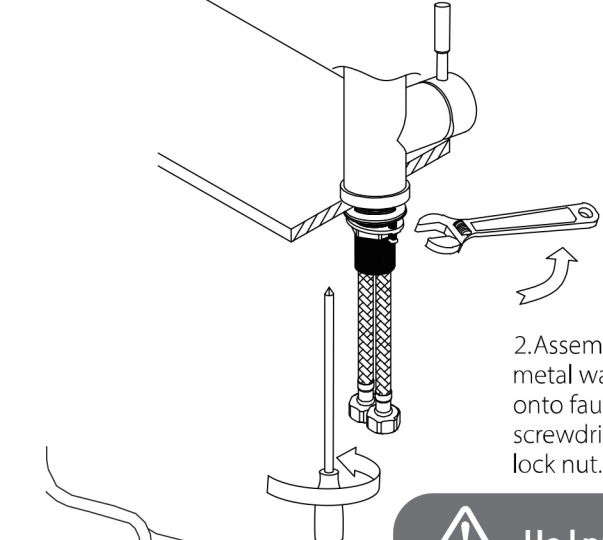
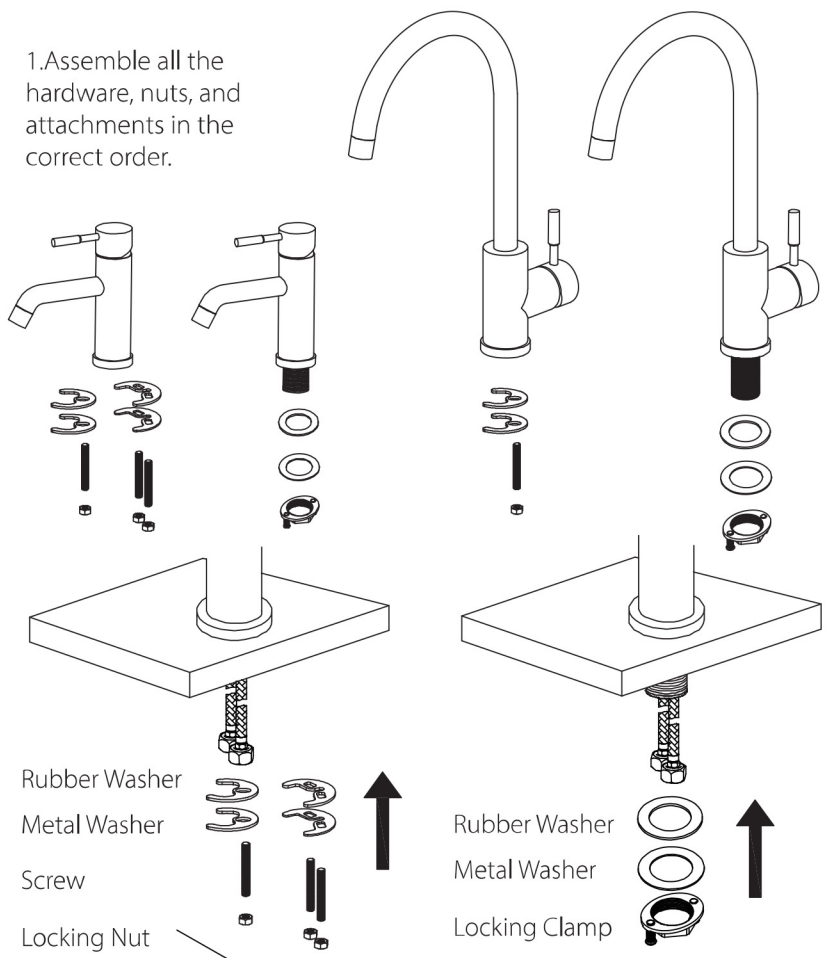


Vanity Basin Series

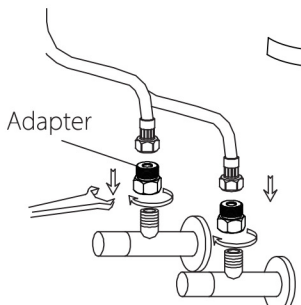


Single Hole Mounting

1. Assemble all the hardware, nuts, and attachments in the correct order.



2. Assembly rubber washer, metal washer and lock nut onto faucet, then use the screwdriver to tighten the lock nut.



3. If the product hose thread does not match, an additional adapter is required.

⚠ Helpful Hint:
Always use the supplied rubber washers on water supply connectors to prevent leaking. Also, always use an adequate amount of plumber's putty or thread sealing tape to prevent connectors from leaking.

Triple Hole Mounting

1. Turn off all water supply lines and drainage lines.
2. Clean the installation area thoroughly and remove any excess debris.
3. To install the controls, disassemble and reassemble the control assembly as seen in *Figure A, B, C*.
4. To install the spout, disassemble and reassemble the faucet assembly as seen in *Figure D, E, F*.
5. Once the faucet and controls are all connected, connect the hoses between them. Connect the water supply connection to the control assembly. (See *Figure G, H, I*)

Figure A

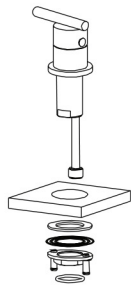


Figure B

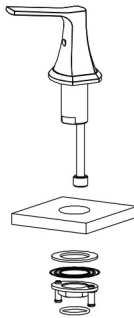


Figure C

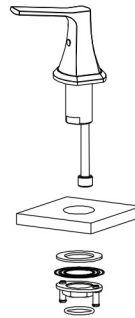


Figure D

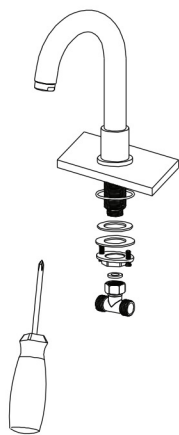


Figure E

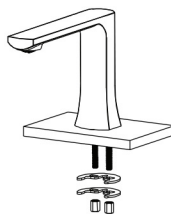


Figure F



Figure G

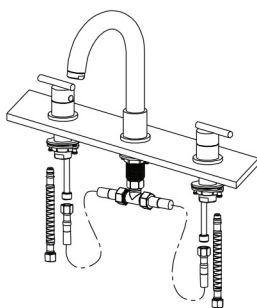


Figure H

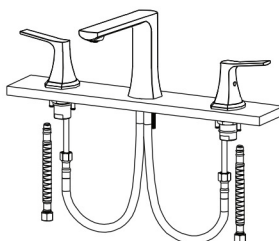
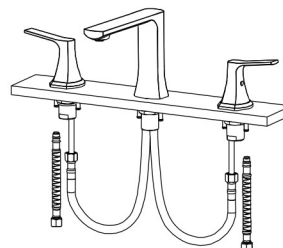
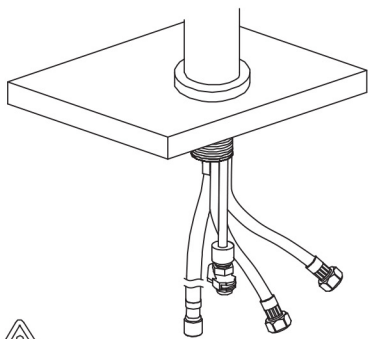


Figure I



Pull out Kitchen Faucet



Plastic Clamp
avail. on some models

Rubber Washer

Metal Washer

Locking Clamp



Figure 1

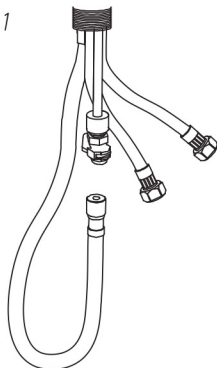


Figure 2

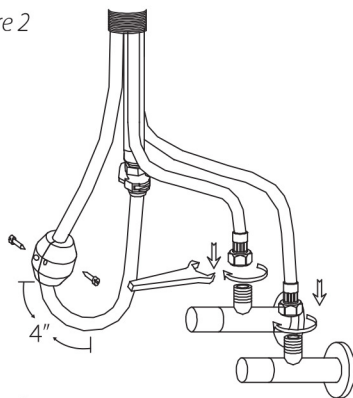
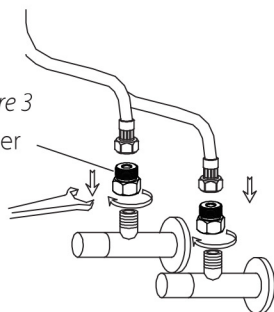
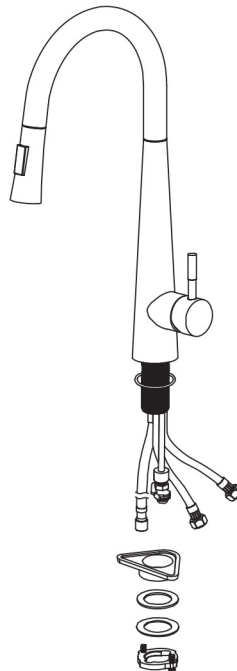


Figure 3
Adapter

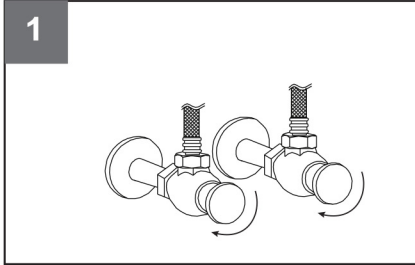


1. Assemble all the hardware, nuts, and attachments in the correct order. (See Figure 1)
2. If your faucet has a pull-out, connect the pull-out hose to the connector. Depending on your faucet model, it could have a threaded connector, or a snap-on connector. (See Figure 1)
3. Once the pullout hose is attached to the connector, let the hose hang naturally. Install the pull-out weight 4" away from the lowest point of the loop, in the opposite direction of the connector. (See Figure 2)
4. Before connecting the faucet to the water lines, make sure to flush the lines completely by running the water supply lines into a bucket or container. Use the adjustable wrench to attach the hot and cold water supply lines accordingly. (See Figure 2)
5. Please continue to the testing section on the back side of this manual.
6. If the product hose thread does not match, an additional adapter is required. (See Figure 3)



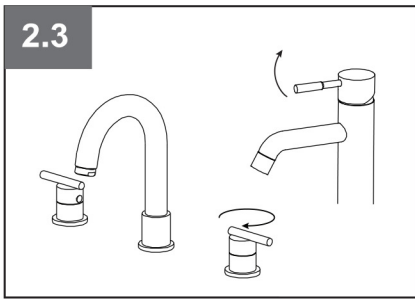
Testing

1



1. Turn on water supplies and check all connections for leaks. If there are leaks, turn off water supplies and check to see if proper washers were used along with proper thread sealing tape.

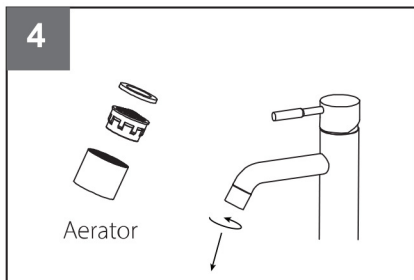
2.3



2. Turn handles up and down or left and right (where applicable) and test both cold and hot water connections.

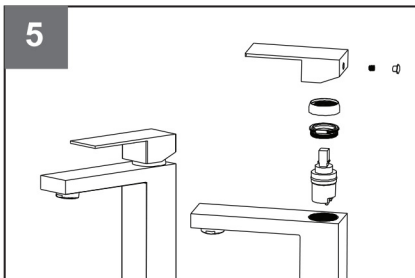
3. For models with dual spray selection, make sure to test both types of spraying thoroughly.

4



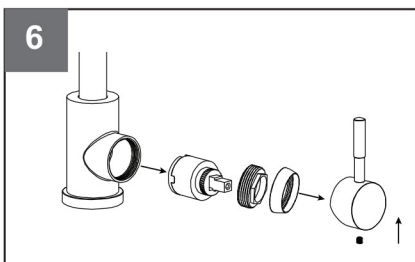
4. Remove aerator and let both cold and hot water run for one minute. This will remove any debris in the system that might otherwise clog the aerator.

5



5. Find and remove the concealer cap to expose a hex screw. The concealer cap may sometimes look like a H/C cap. Then remove the hex screw to distach the handle.

6



6. Use a pair of pliers to remove the cartridge by gently pulling upwards. Sometimes there is a metal ring that needs to be removed before the cartridge can be removed.



Call us (9-8 EST): +1 888-257-3857
Email us (24/5) : service@casainc.com

Message us : +1 562-551-8092
For sales : dtc@casainc.com